

**dautomatic**

**Installation  
Manual & User  
Guide**



# H400

**Automatismos para  
Portões de Batente**

Automatismos para  
Puertas de Batiente

Marca 100%  
**Portuguesa**

## WARNING

Please read the manual carefully before installing or using this product. Your new swing gate automation system should be installed by a qualified or licensed professional. Trying to install or repair the automation system without proper technical expertise may cause serious injury, death, and/or property damage.

## Contents

Important Safety Recommendations	°	°
Intended Use and Application		°
Package Contents	°	°
Automation Features	°	°
Installation		°
Installation Measurements		°
Bracket Mounting		°
Motor Mounting		°
Installation Map	°	^

## Important Safety Recommendations

This manual includes essential safety information for users.

Improper installation can cause serious harm to people and property.

Keep this manual handy for future reference.

Always disconnect the power before installation. Make sure the grounding connection is secure.

Product use and installation must meet the requirements of Machine Directive  $\sim^{\circ\circ}/\sim / CE$ .

Ensure the system complies with standards EN  $\sim^{\circ\circ}$  and EN  $\sim^{\circ\circ}$ .

Installation should only be done by qualified professionals familiar with potential risks and fully adhering to current regulations.

Only use the product for its intended purpose.  
Any other use is considered dangerous and strictly forbidden.

Do not let children play with control devices or within the enclosed operating area.

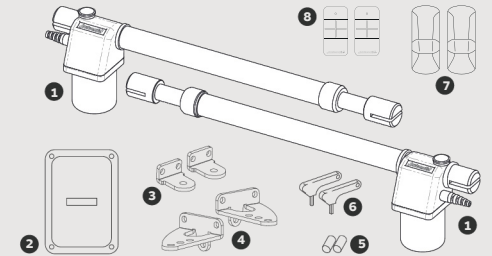
Keep all remote controls (transmitters) out of children's reach.

## Intended Use and Application

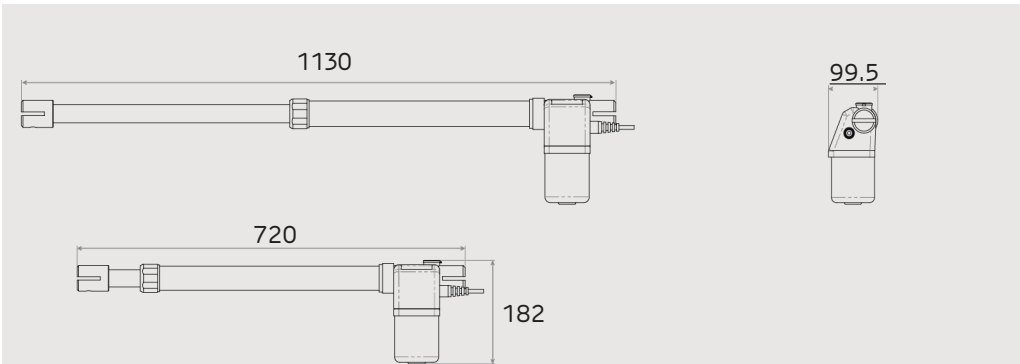
The H $\sim^{\circ\circ}$  automation system is designed for swing gates. Use of this product for any purpose other than described above, or installation outside the instructions in this manual, is strictly prohibited. All H $\sim^{\circ\circ}$  systems are non-reversible, so no electric lock is required. If there is a power failure, you can easily unlock the gate for manual operation.

## Package Contents

2. Two Swing Gate Motors
3. Electronic Control Unit
4. Two Front Mounting Brackets
5. Two Rear Mounting Brackets
6. Capacitors
7. Release Keys
- Pair of Photocells
- Two Remote Controls



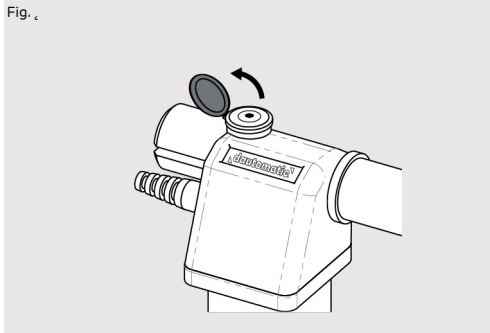
## Automation Features



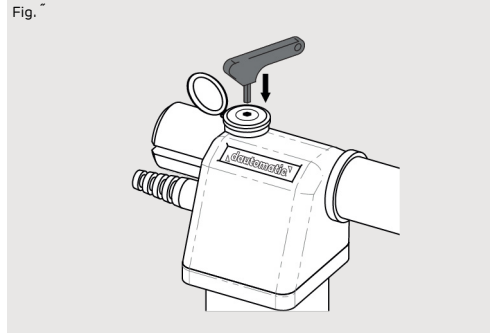
Power Supply:	$\sim^{\circ}$ Vac $\sim^{\circ}/\sim$ Hz
Power:	$\sim^{\circ}$ W
Current:	$\sim^{\circ}$ A
RPM:	$\sim^{\circ\circ}$
Noise Level:	LpA < $\sim^{\circ}$ dB (A)
Force:	$\sim^{\circ\circ}$ N
Operating Temperature:	$\sim^{\circ}\sim$ $\sim^{\circ}$ C
Thermal Protection:	$\sim^{\circ}$ $\sim^{\circ}$ C
Protection Rating:	IP $\sim^{\circ}$
Operating Frequency:	$\sim^{\circ}\%$
Opening Time:	$\sim^{\circ}$ sec to $\sim^{\circ}$ sec
Maximum Travel:	$\sim^{\circ\circ}$ mm
Maximum Leaf Width:	$\sim^{\circ\circ}$ mm
Capacitor:	$\sim^{\circ}$ $\mu$ F

The dimensions of the H $\sim^{\circ\circ}$  Automation System are given in millimeters (mm)

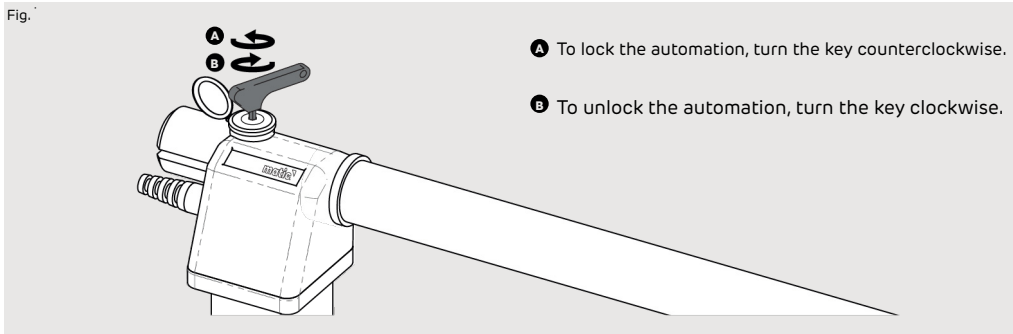
# Installation



6. Open the plastic cover



7. Insert the key into the unlock shaft



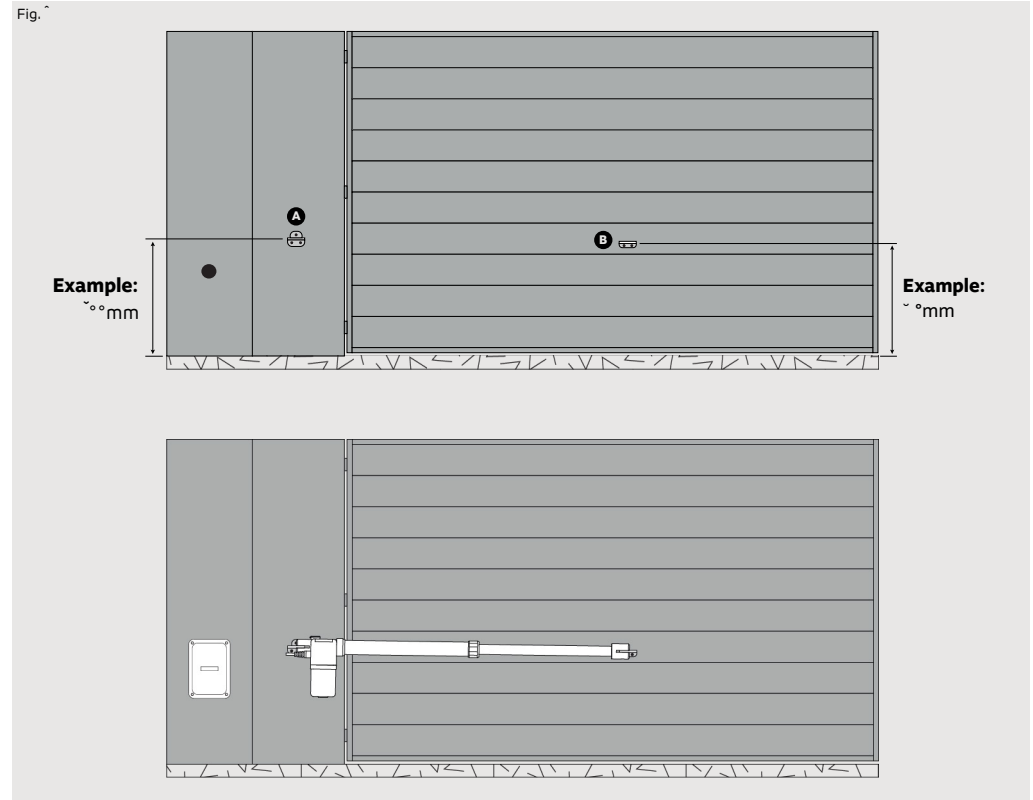
**A** To lock the automation, turn the key counterclockwise.

**B** To unlock the automation, turn the key clockwise.

- 8. Turn the key in the direction shown in the illustration to unlock.
- 9. The system is now unlocked.

**\*Note. For automatic operation, remember to relock the system by turning the key as shown in Fig. 8.**

The automation systems should be installed with a slight downward slope at the front, to prevent water from seeping in through the extendable arm. The front bracket must be mounted on the gate at a lower height than the rear bracket.



**Measurement A.** Vertical distance from the ground to the top edge of the rear support plate.

**Cota B.** Vertical distance from the floor to the top edge of the front mounting plate.

1. Set Cota A (this can be any dimension you choose).
2. Set Cota B by subtracting 10mm from Cota A; the result is your Cota B.

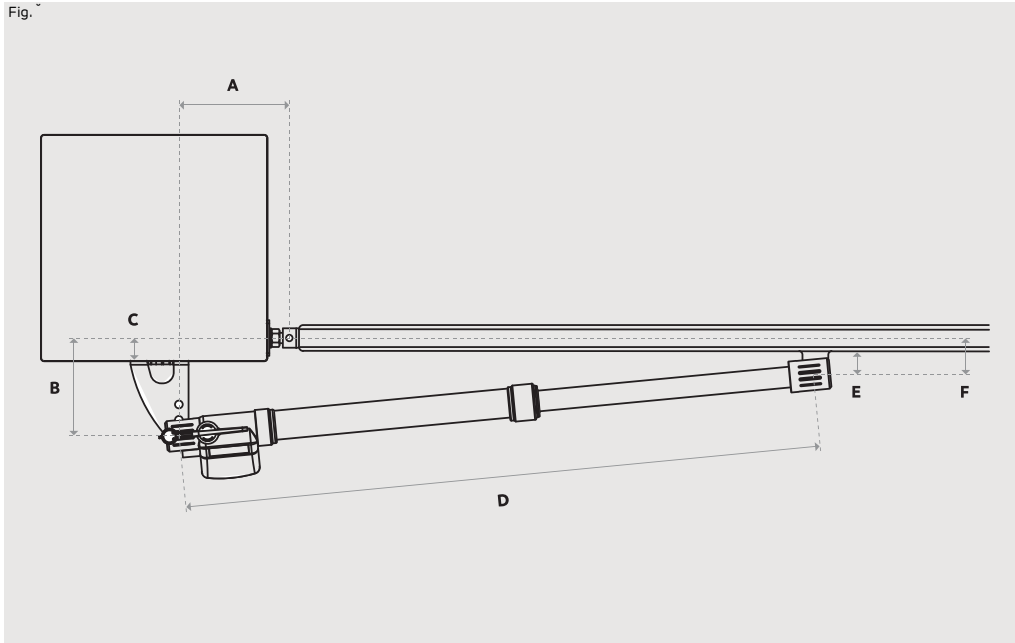
### Example:

If the rear support height (**Cota A**) is set to 600mm, then the front support height (Cota B) will be **590mm** (600mm-10mm).

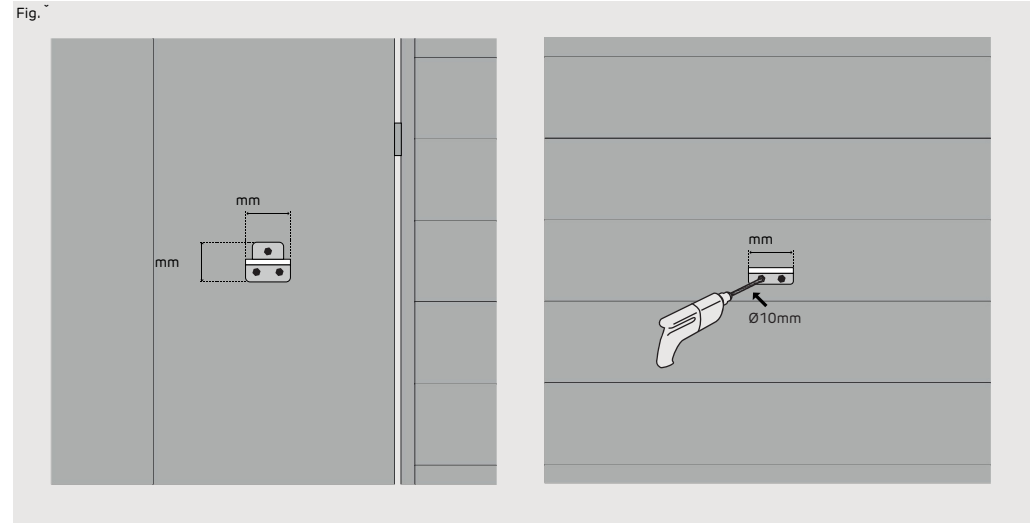
### Attention!

It is essential to follow these measurements! This ensures proper operation and extends the life of the automation system!

## Installation Dimensions



## Bracket Mounting

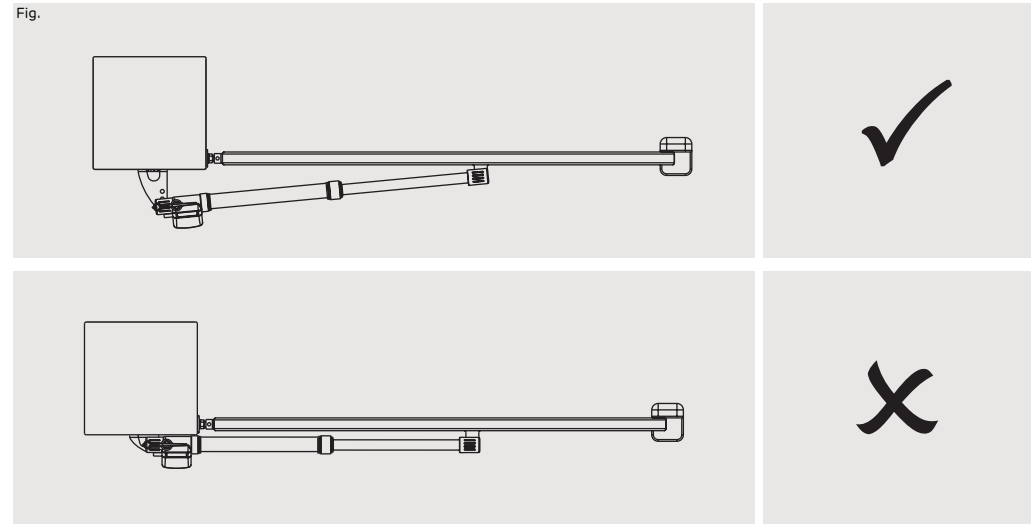


Once installation is complete, make sure the mechanism is properly set and that all safety features and manual release options work as intended

## Dautomatic H<sup>~oo</sup>

A	B	C	D	E	F	a (max)
110	180	57	1100	40	70	95 °
110	210	87	1100	40	70	95 °
120 150		27 1100		40	70	95 °
720 1200 1307	150 130 7		70 95° 1100 40 70 100° 1100 40			
150 150		27 1100 40			70	105 °
150	200	77	1100	40	70	100 °
160	150	27	1100	40	70	110 °
160	160	37	1100	40	70	105 °

## Motor Installation



# Installation Map

Fig.



Fig.

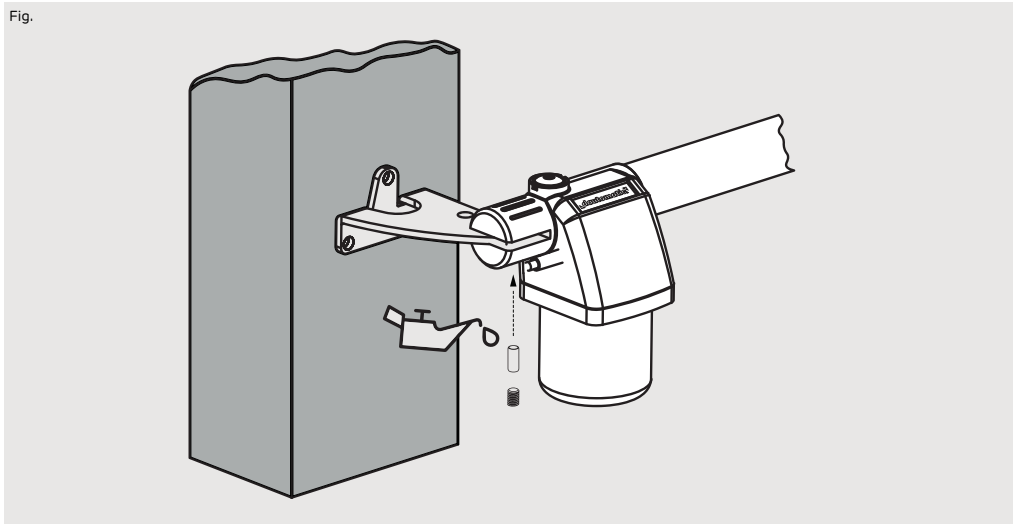
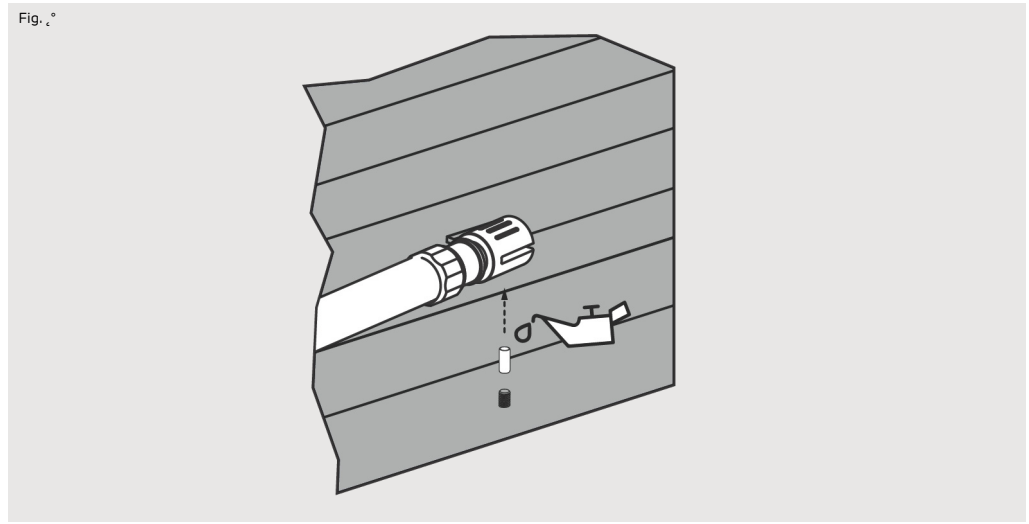
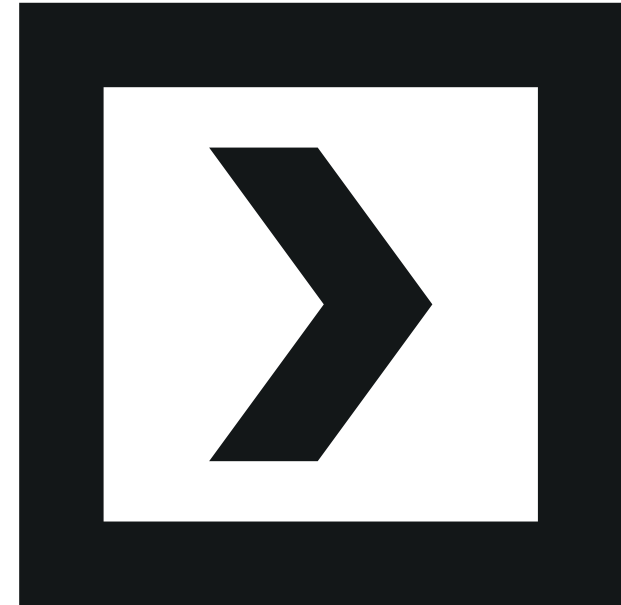


Fig. 4°



Apply a small amount of lubricant to each pin before inserting it into its bracket to prevent friction. Manually open and close the gate to ensure it moves smoothly without any obstruction. This will help the automation system operate without issues.



**Daportas Automatics, Ltd.**

1691 Industrial Street  
4750-841 Barcelos, Portugal

+351 253 891 418  
info@daportas.pt

**daportas.pt**  
**dautomatic.pt**