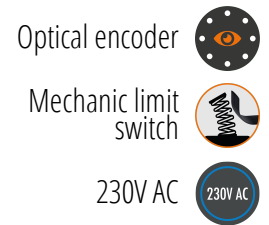


# PRODUCT TECHNICAL DATASHEET

# H30/643



CODE	DESCRIPTION	PCS/PALLET
H30/643	Electromechanical motor 230V AC, irreversible, ideal for sliding gates up to 600 kg with built-in control unit H70 and optical encoder. Complete with fixing plate with tie rods and mechanical limit switch.	44

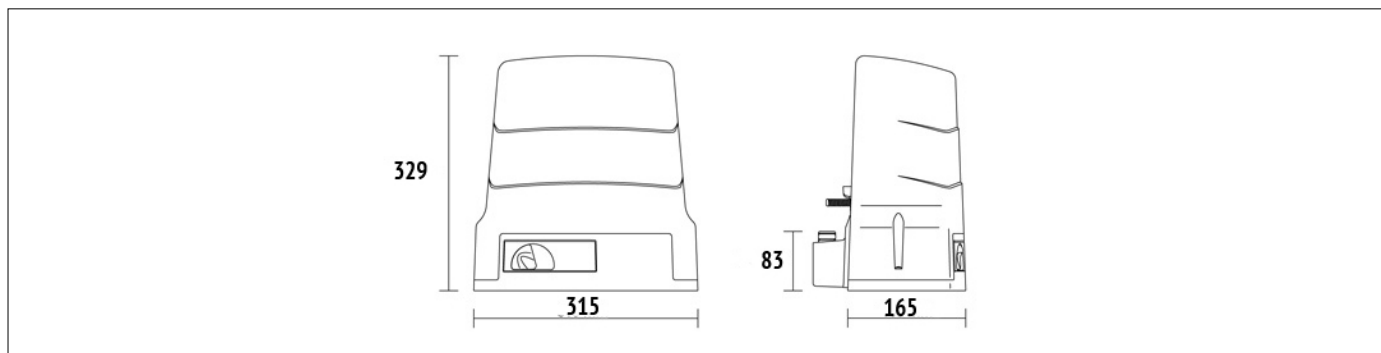
PRODUCT TECHNICAL SPECIFICATIONS	
Max gate weight	600 kg
Power line supply	230V AC - 50Hz
Stand-by consumption	0,5W
Motor power supply	230V AC
Power	350W
Frequency of use	50%
Thrust	850N
Operating temperature	-20+55 C°
Protection level	IP44
Reductor Type	Irreversible
Manoeuvre speed	9.5 m/min (0.16 m/s)
Motor thermal protection	150°C
Incorporated condenser	12,5 µF
Limit switch	Mechanical
Onboard control unit	H70/104AC
Encoder	Optical
Type exit gear	Z15/mod 4
Maximum dimension product in mm (L x W x H)	315 x 165,8 x 329

Product weight packed (Kg) 11,4

Number items per pallet/box 44

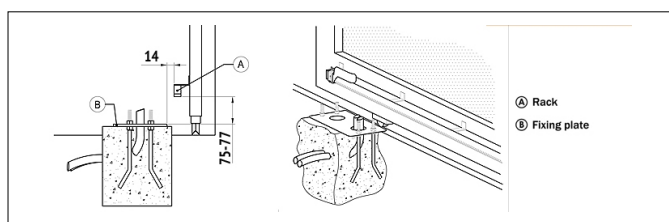
---

# PRODUCT DIMENSIONS AND PREPARING FOR INSTALLATION

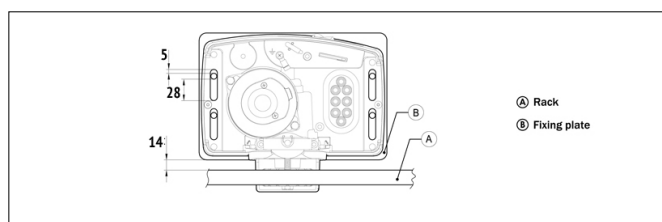


DIMENSIONS

## PRODUCT PREPARING FOR INSTALLATION



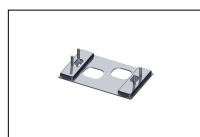
PREDISPOSITION FOR STANDARD INSTALLATION



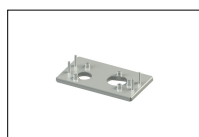
## PRODUCT ACCESSORIES



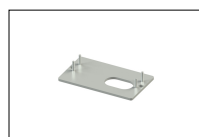
**KT214/SA**  
Adapter plate complete with tie rods and screws for series H30.



**KT214/SC**  
Adapter plate complete with tie rods and screws for series H30.



**KT214/SF**  
Adapter plate complete with tie rods and screws for series H30.



**KT214/SN**  
Adapter plate complete with tie rods and screws for series H30.



**KT221**  
Raised fixing plate for H30 series (+3,5 cm).



**GA550**  
Galvanised steel rack 22x22x1000, module 4.



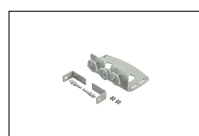
**GA551**  
Galvanised steel rack 30x12x1000, module 4, complete with spacers and screws.



**GA554**  
Pocket of 6 spacers (2,5 cm) with screws.



**GA557**  
Roger Technology nylon rack, module 4 to 6 connectors, L.1000.



**LT330**  
Kit for chain drive for BH30 - H30 series.



**LT334**  
1/2" X 5/16" 5 meter chain piece for LT330 complete with joint.