



EF25

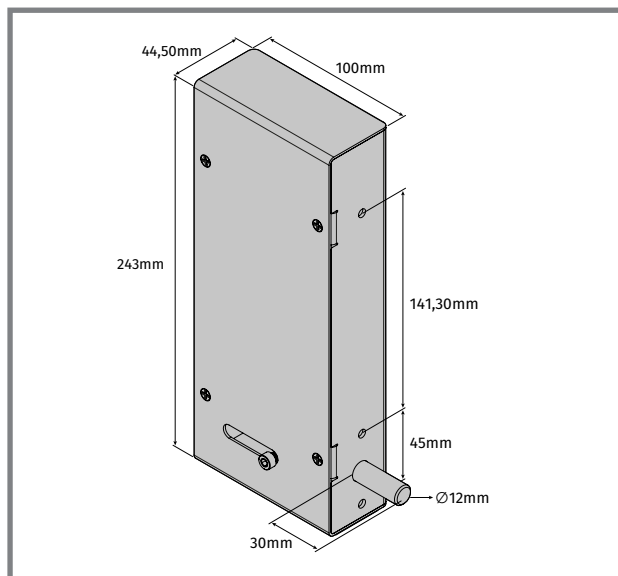
USER'S / INSTALLER'S MANUAL

Correct disposal of this product (electrical and electronic equipment waste).

V2.1
REV. 08/2025

THE PRODUCT

The EF25 lock has been developed for application on sectional doors controlled by the MC60 control board.



SAFETY INSTRUCTIONS

- The ELECTROCELOS S.A. is not responsible for the improper use of the product, or other use than that for which it was designed.
- The ELECTROCELOS S.A. is not responsible if safety standards were not taken into account when installing the equipment, or for any deformation that may occur.
- The ELECTROCELOS S.A. is not responsible for insecurity and malfunction of the product when used with components that were not sold by the them.

Simplified EU Declaration of Conformity

The undersigned **MOTORLINE ELECTROCELOS, S.A.**, with registered **Travessa do Sobreiro, n.º 29, 4755-474 Rio Côvo (Santa Eugénia), Barcelos**, declares that the present type of radio equipment - **Electric lock EF25** - complies with the Directive 2014/53/EU.

The full text of the declaration of conformity is available at the following internet address:

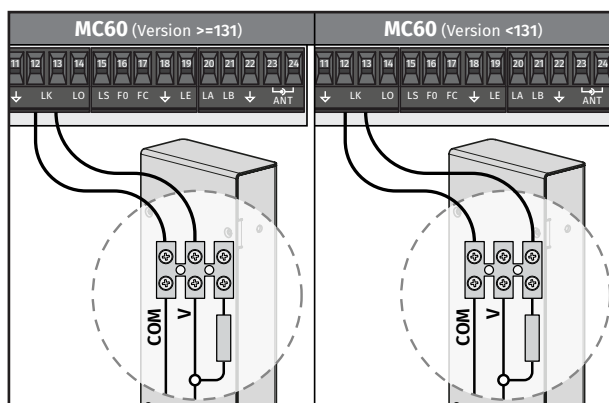
<https://motorline.pt/certification/ef25>



TECHNICAL CHARACTERISTICS

• Power Supply	12V DC
• Maximum current	1.3A
• Maximum impulse time	100ms
• Weight	1.4kg
• Packaging dimensions	262mm x 116mm x 68mm

CONNECTION SCHEME TO MC60 C. BOARD



Attention: Check the MC60 version before making the connection.

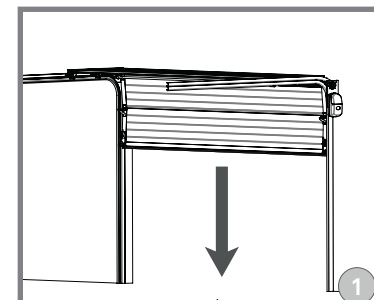
INSTALLATION

The EF25 lock must be installed with a minimum margin of 5 mm from above one of the wheels on the floor guide. When the control board receives an opening order, it must firstly retract the lock and then initiate the opening maneuver to ensure that the lock never gets stuck by the gate.

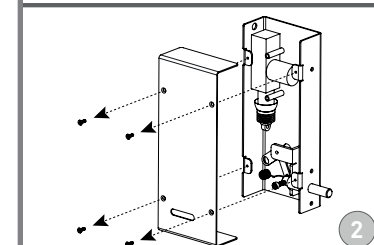


The EF25 lock is designed to work along with the MC60 control board. Only with this control board the correct operation of the components is guaranteed!

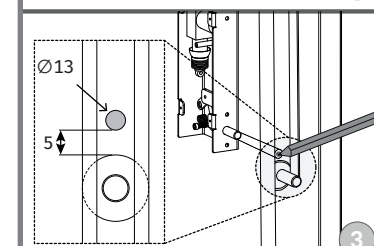
The EF25 is a lock of double direction, one impulse will be to open and the other, to close.



1 • Close the gate to determine the installation location (img. 1).



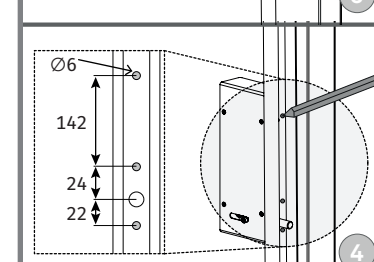
2 • Remove the cover of the lock unscrewing the 4 bolts (img. 2).



3 • Make a mark for a Ø13mm hole, 5mm above a wheel of the gate to pass the lock's latch.



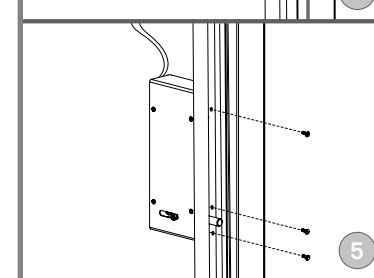
It is necessary that the lock's latch is positioned 5 mm above the wheels as shown in the image.



4 • Reopen the gate.

5 • Drill the hole using a Ø13mm borer.

6 • Aim switching latch in the hole and make the remaining markings.



7 • Drill the holes with Ø6mm drill, apply the lock in the guide and tighten with 3 screws and nuts (img. 4).

8 • Refit the cover into the lock and close it with the 4 bolts.

9 • Make the electrical connections as shown in the diagram on the left.

Measures in (mm).